

南亞 tairilin



*Delight*<sup>®</sup> 吸濕排汗纖維

A New Choice for Breathing,  
Quick-Drying, Soft,  
and Comfortable Fabric



# Delight<sup>®</sup>

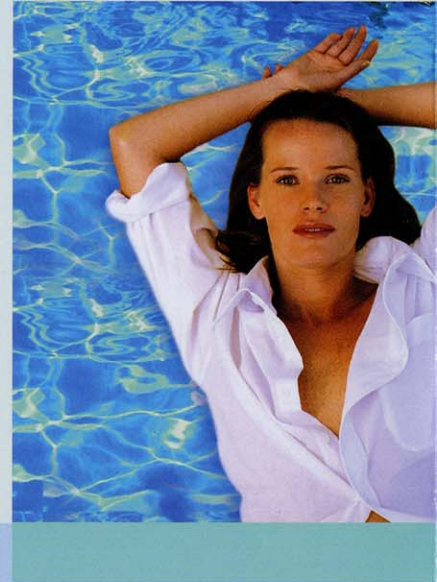
A New Choice for Breathing, Quick-Drying, Soft, and Comfortable

## 吸濕排汗纖維

### 吸汗·速乾·柔軟舒適的新標準

Delight<sup>®</sup> 為南亞公司針對吸汗速乾所開發的系列新機能性纖維。特殊的異型斷面結構，能在肌膚表層產生汗水時，藉著毛細現象迅速傳導至織物外層，使肌膚保持乾爽與舒適。且由於 Delight<sup>®</sup> 擁有比一般纖維更大的表面積及纖維間隙，更能使汗水、濕氣快速散發到空中，速乾性較一般織物為佳，從此遠離濕黏悶熱的不快感受。並可配合抗紫外線、遠紅外線及抗菌防臭等多機能複合，進而提昇穿著的舒適性及機能性。

Delight<sup>®</sup> is a serial perspiration-absorbing/quick-drying new function fiber developed by NAN YA. The special cross-section structure can transport perspiration rapidly to outer layer of cloth by capillary, and help to keep the skin dry. Delight<sup>®</sup> has larger surface area due to special cross-section, it can evaporate perspiration to air and dry quickly than normal textile. And also, Delight<sup>®</sup> can combine with UV-cut fiber, far infrared ray and antibacterial function to enhance the comfortability and function of wearing.



### Delight 四大特長 Delights four special features

#### 吸汗

特殊的異型斷面結構，讓 Delight<sup>®</sup> 具有優異的蕊吸特性，能迅速吸附汗液、導入纖維間隙，保持肌膚乾爽。且吸水高度更為一般聚酯纖維的 7.5 倍。

#### Perspiration Absorption

Its special concave cross-section structure has superior moisture absorption feature that can swiftly absorb sweat, and conduct the sweat through fabric gap as to making human skin dry. Its wicking height is 7.5 times higher than other polyester fiber.



Delight<sup>®</sup> with "+" cross-section structure



reg PET



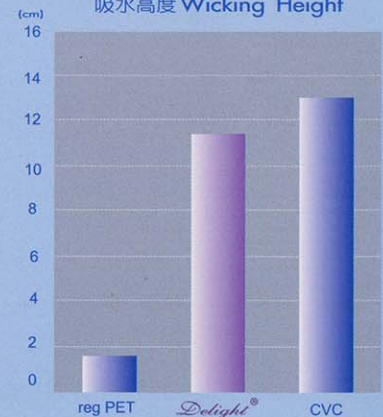
Delight<sup>®</sup>



CVC

Diffusion 2 sec after dripping

吸水高度 Wicking Height



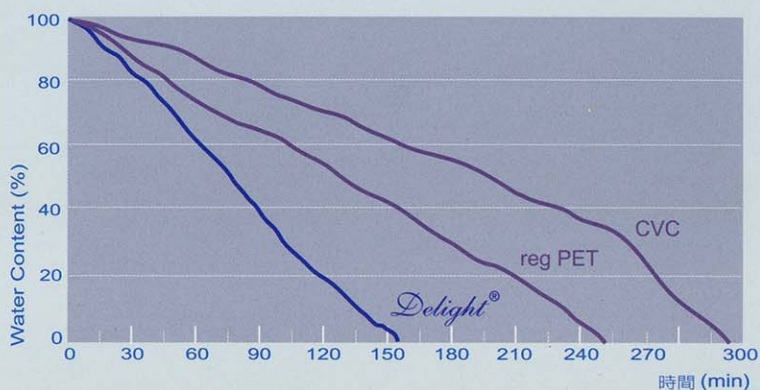
### 速乾

利用Delight®特殊的溝槽設計，大幅增加產品的蒸發面積，可快速發散汗水，加上Delight®的低回潮率特性與纖維表面溝槽構造，能有效改善布料透氣性，不遲滯汗水，不悶存熱氣。

### Quick Drying

With its special concave structure, the diffusing area of water is greatly increased thereby sweats can be evaporated more fastly. Moreover, Delight®'s fabric concave-structure surface and its special feature of low moisture regaining improves that fiber's quality as to being more airyness and no retaining of sweat and heat.

乾燥速度 The drying curve of fabrics



### 輕量

Delight®的異型斷面設計，讓它的單纖維間隙較一般圓斷面纖維高，與相同厚度的一般聚酯纖維相較，約可輕量 12 %，穿著舒適。

### 乾爽

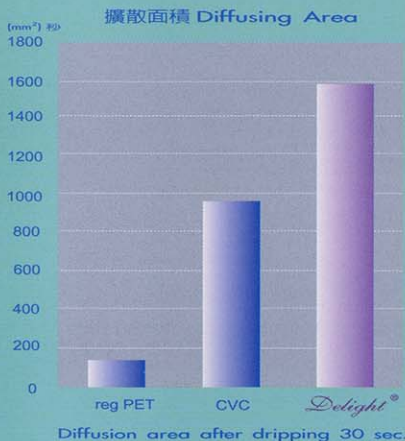
由於纖維斷面翼片結構與肌膚接觸面積小，可在乾爽與柔軟間能取得最適平衡，賦予布料全然一新的乾爽觸感。配合多條數、細單尼的設計，更能增添柔軟觸感。

### Light Weight

Delight®'s special cross-section design makes the gap between single fiber higher than other single circle cross-section fiber; and therefore it is 12% lighter than comparing with other polyester fiber with the same thickness.

### Fresh Feel

Due to the fiber's cross-section wing-piece structure, its contact surface with human skin is decreased, making the wearing this kind of textile a refreshing dry touch. Compound with the design of increasing the numbers of filament and fine denier the soft touch can be more enhanced. So Delight® can get balance between soft and dry.



## 產品規格 Specification

### 規格 Specification

### 特徵 Features

Delight®	50/48 75/48 75/96 75/48/2 75/96/2	dry, soft
Delight®-plus	75/96 75/96/2	dry, soft, elegant luster
Delight®-nature	50/100 50/100/2 70/100 70/100/2	dry, soft, cottonlike

*Delight*



**南亞塑膠工業股份有限公司**  
**NAN YA PLASTICS CORPORATION**

POLYESTER FIBER DIV.

營業處：台北市敦化北路201號

201, TUN HWA N. ROAD, TAIPEI, TAIWAN

TEL : 886-2-28330~34 FAX : 886-2-27186311

E-MAIL : 656565@npc.com.tw

開發組：台北縣泰山鄉大科村南林路100號

100, NAN LIN RD., DAH-KO CHUN, TAISAN HSIANG,  
TAIPEI HSIEN, TAIWAN

TEL : 886-2-29019141EXT2001~2003

FAX : 886-2-29041384

e-mail : mingyu@npc.com.tw