

**NAN YA**

# 螺桿 & 套筒

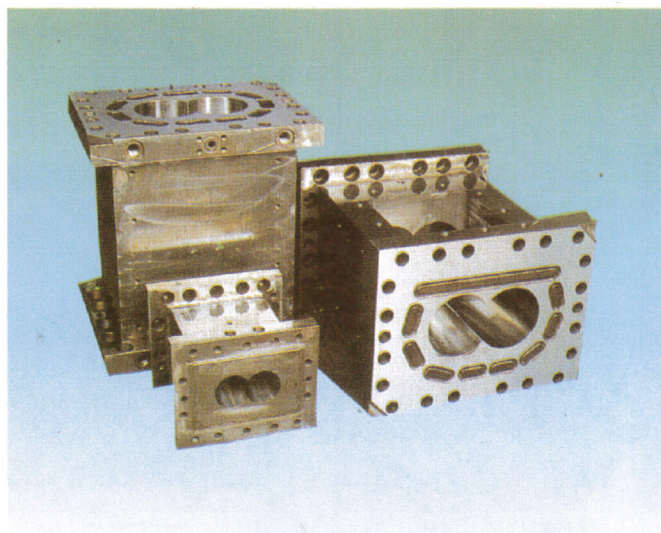
SCREW & BARREL

塑膠加工業

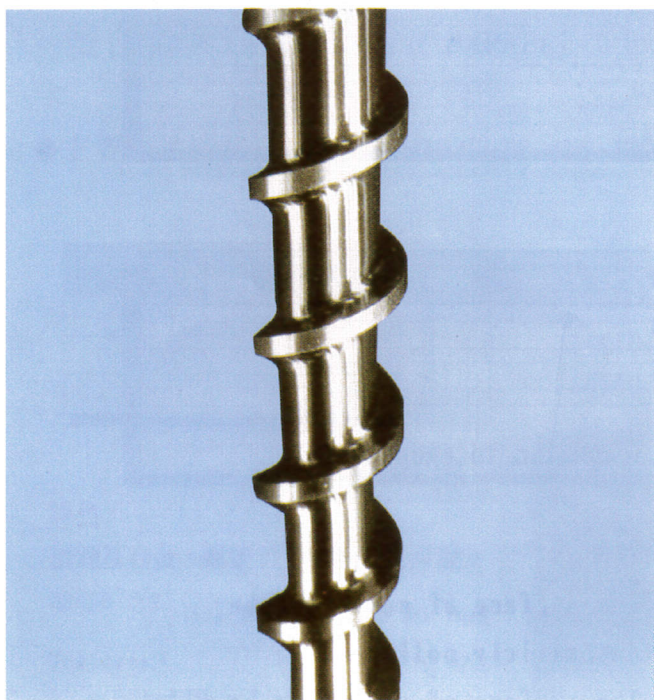
PLASTICS PROCESSING  
INDUSTRY



螺桿節 SCREW SEGMENT



工程塑膠套筒 ENGINEERING PLASTICS BARREL



螺桿 SCREW



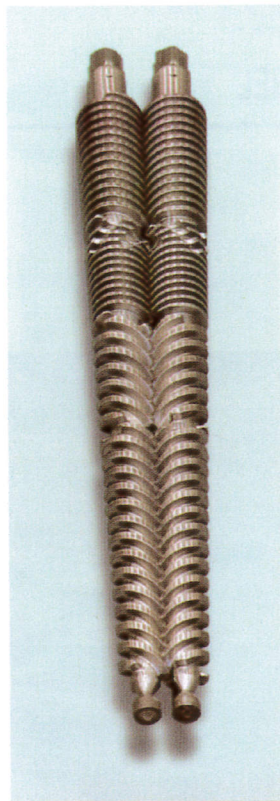
套筒 BARREL



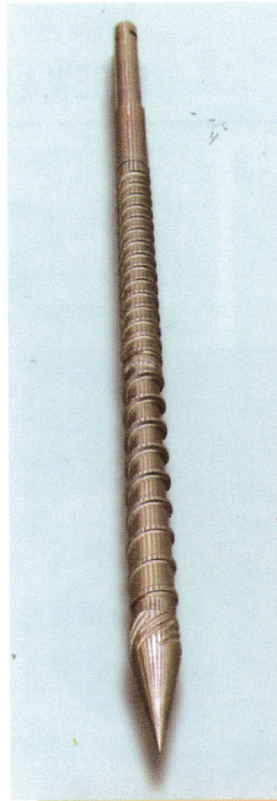
螺桿 (單、雙、錐)  
SCREW(SINGLE, TWIN, TAPER)



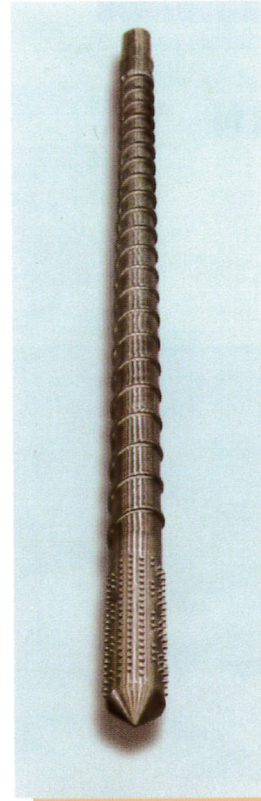
雙螺桿 TWIN SCREW



錐狀螺桿 TAPER SCREW



單螺桿 SINGLE SCREW



押出螺桿 EXTRUDER SCREW

◆主要產品規格表

類別	外徑尺寸	長度
單螺桿	$\phi 50 \sim \phi 330\text{MM}$	4810MM
雙螺桿	$\phi 30 \sim \phi 150\text{MM}$	6500MM
錐狀螺桿	$\phi 50 \sim \phi 80\text{MM}$	2270MM
押出機螺桿	依產品別設計	

◆MAIN PRODUCTS AND SIZE LIST

TYPE	OUTER DIAMETER	MAX LENGTH
SINGLE SCREW	$\phi 50 \sim \phi 330\text{MM}$	4810MM
TWIN SCREW	$\phi 30 \sim \phi 150\text{MM}$	6500MM
TAPER SCREW	$\phi 50 \sim \phi 80\text{MM}$	2270MM
EXTRUDER SCREW	DESIGN ACCORDING TO PRODUCTS	

特色：

1. 螺桿表面自動拋光品質優良
2. 表面PTA噴焊耐磨金屬壽命提高

Features：

1. The surface of screw can be automatically polished.
2. The surface of screw can be PTA welding by antiwear-metal. So it has long life.



## 套筒（單、雙、錐）

BARREL(SINGLE, TWIN, TAPER)

### ◆主要產品規格表 (MAIN PRODUCTS AND SIZE LIST)

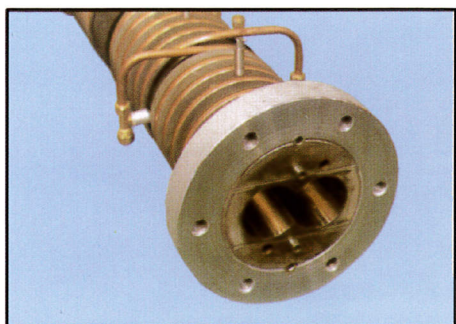
類別 (TYPE)	內孔尺寸 (BORE DIAMETER)	長度 (MAX LENGTH)
單孔套筒 SINGLE HOLE BARREL	$\phi 50 \sim \phi 330\text{MM}$	3495MM
雙孔套筒 TWIN HOLE BARREL	$\phi 30 \sim \phi 150\text{MM}$	3042MM
錐孔套筒 TAPER HOLE BARREL	$\phi 50 \sim \phi 80\text{MM}$	1849MM

#### 特色：

精密深孔加工，耐磨耗壽命長尺寸精確

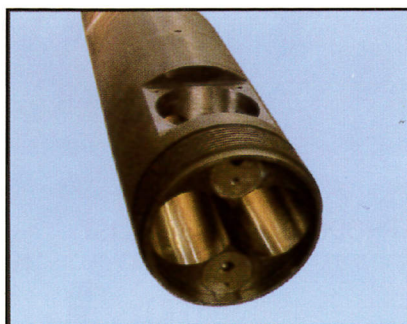
#### Features：

It is precise depth-hole processing, protect wear, long life, accurate dimension.



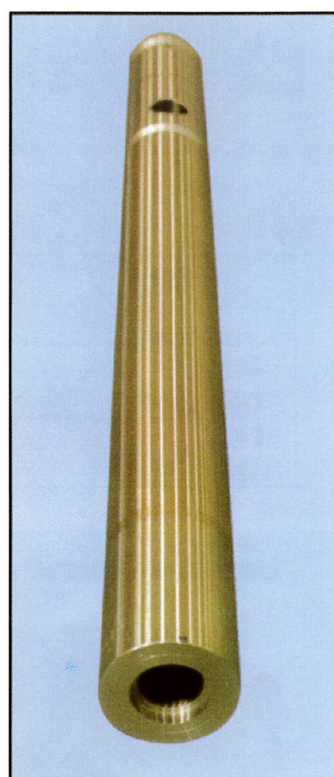
雙直孔套筒

TWIN HOLE BARREL



雙錐孔套筒

TWIN TAPER HOLE BARREL



單孔套筒

SINGLE HOLE BARREL

## 雙合金套筒 (BIMETALLIC BARREL)

### ◆主要產品規格表 (MAIN PRODUCTS AND SIZE LIST)

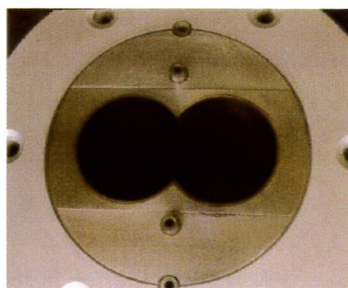
種類 (TYPE)	尺寸 (SIZE)
1	NPC-75
2	NPC-90
3	NPC-130

#### 特色：

為鎳基合金，耐磨耗、耐腐蝕，硬度可達 HRC60° ±2°

#### Features：

It's an alloy base of Nickel that can protect wear and corrosion.



雙合金套筒 BIMETALLIC BARREL



## 工程塑膠螺桿套筒

### SCREW SEGMENT & BARREL



#### ◆主要產品規格表(MAIN PRODUCTS AND SIZE LIST)

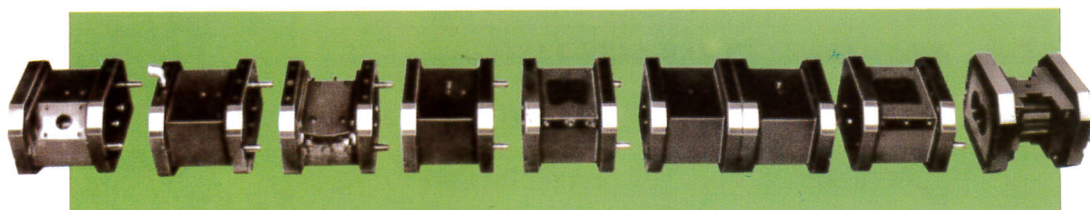
類 別 (TYPE)	尺 寸 (DIAMETER)
螺桿節 SCREW ELEMENT	$\phi 25 - \phi 174$
攪拌葉 KNEEDER ELEMENT	$\phi 25 - \phi 174$
套 筒 BARREL	$\phi 25 - \phi 174$

#### 特色：

1. 依各種不同原料做組合。
2. 使用特殊鋼真空處理或超耐磨耐用，提升壽命。

#### Features：

1. Assemble according to different materials.
2. Treat with alloy steel under vacuum condition. Super wear-resisting and longer life.



## 南亞塑膠工業股份有限公司 NAN YA PLASTICS CORPORATION

工務部 · ENGINEERING DIV.

總公司：

台北市10591敦化北路201號

電話：886-2-27178298

傳真：886-2-27178530

嘉義機工廠：

嘉義縣太保市南新里61221北港路二段201號

電話：886-5-2373711轉650、654、658

傳真：886-5-2375084

TAIPEI OFFICE:

NO.201, TUN HWA N. ROAD, TAIPEI, TAIWAN, R.O.C.

TEL:886-2-27178298

FAX:886-2-27178530

CHIA-YI MACHINERY PLANT:

201, SECTION 2, PEI KANG ROAD, NAN HSING LEE, TAIPAU CITY,

CHIA-YI HSIEN, TAIWAN, R.O.C.

TEL:886-5-2373711 EXT650、654、658

FAX:886-5-2375084



本簡介採用南亞珠光身PH-150級  
請勿混入一般紙類回收