



NANYA PLASTICS CORP.

Innovational Mechanical Stretch



Traditional Method to Get Stretch

■ Spadax

- ✓ Excellent Stretch
- ✗ Color Fastness is Issue
- ✗ Fabrics Heavier

■ High Crimp Polyester

- ✓ Good Color Fastness
- ✓ Light Weight is Possible
- ✗ Lower Stretch & Recovery



Spanfit
Carefree

Spanfit
Leisure

Spanfit
Elegant



Spanfit—

A SMART WAY TO Get STRETCH

- ✓ 100% polyster
- ✓ comfortable stretch
- ✓ better color fstness



IMITATE THE SPRING



HOW TO GIVE SPANFIT WITH SPIRAL STRUCTURE ?

1

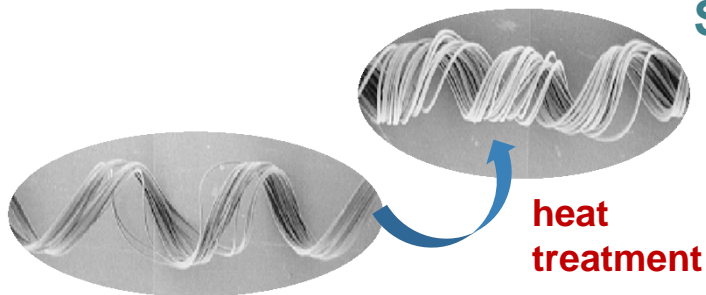
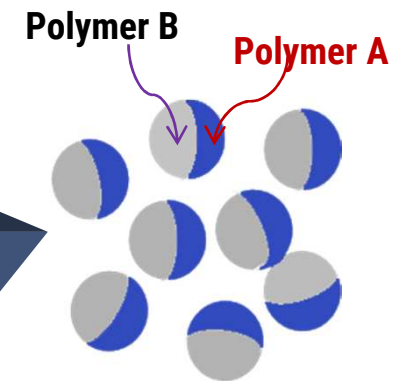
Conjugate
Spinning
Technology

2

Polymer With
Different
Shrinkage

3

Spiral Structure
When Heating



Spiral structure



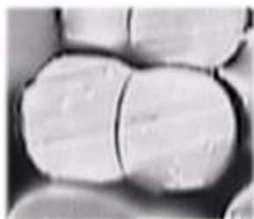


SPANFIT FAMILY

■ Type I

**Spanfit®-
carefree**

PTT/PET



■ Characteristics

FDY Type—
Smooth Touch,
Much Luster
DTY Type—
Less Luster &
Soft Touch



■ Specification

FDY:
30/24,40/36,50/36,
75/36,100/72,150/72
DTY:
30/36,50/36,75/36,75/72,
Heather:
85/84,125/108,150/108

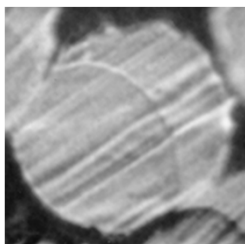


SPANFIT FAMILY

■ Type II

**Spanfit®-
leisure**

PET/PET



■ Characteristics

DTY Type—
Stretch
Dry Touch



■ Specification

38/24, 50/24
75/48, 150/48, 150/96



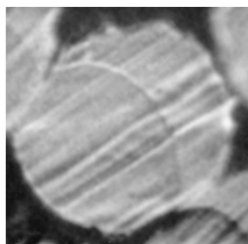


SPANFIT FAMILY

■ Type III

**Spanfit®-
eligant**

PET/PET



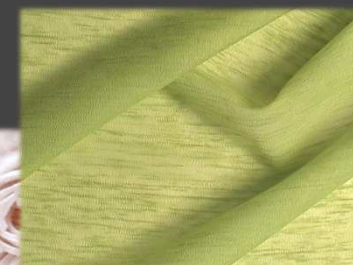
■ Characteristics

**FDY Type—
For Woven**
Stretch
Good Resiliency
For Knitting
Nature Look
Dry Touch



■ Specification

30/12, 50/12, 100/24
30/12 ITY, 50/12 ITY

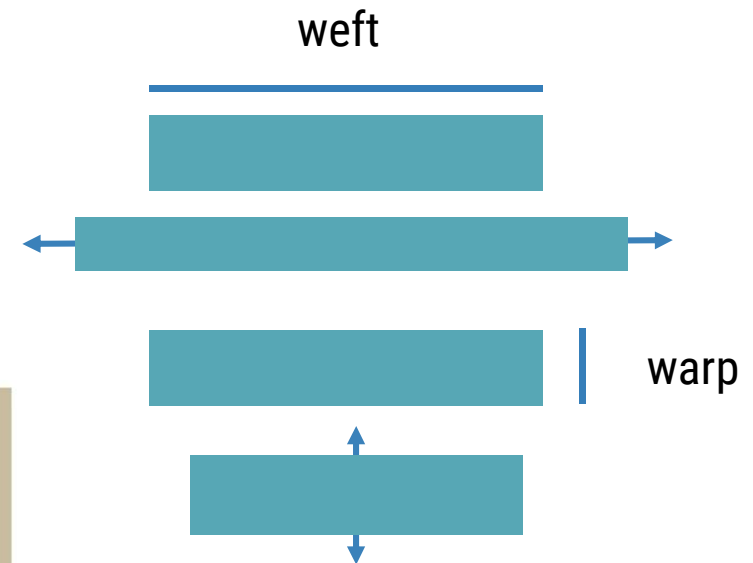
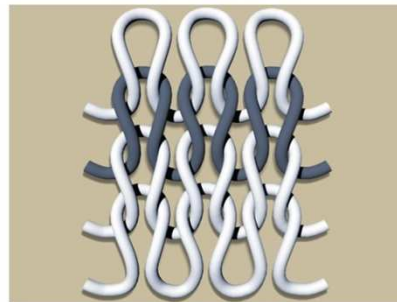




TOPFIT FAMILY

■ Traditional Circular Knitting Fabric

- Weft Side with Better Stretch
Warp Side is Poorer
- Easy to be Snagged

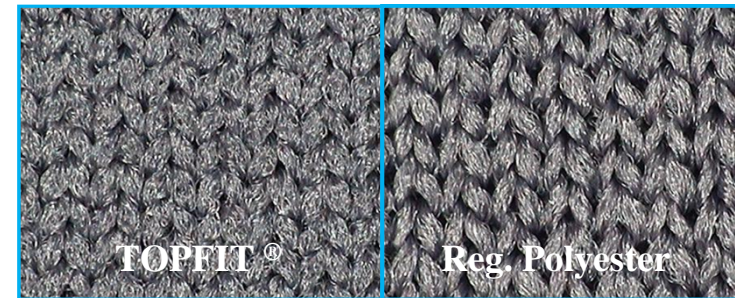




TOPFIT FAMILY

■ TOPFIT—New Mechanical Stretch

- Improve Warp Direction Stretch
- Really Four Way Stretch
- Anti Snagging
- Bulky, Better Hand Feel
- Anti-UV



TOPFIT



warp

Tradition



warp



TOPFIT FAMILY

■ TOPFIT—New Mechanical Stretch

Specification

- 60/48, 60/72, 100/96
- 60/72 FD, 100/144 FD
- 60/72 Heather





Spanfit—

Always Give You Comfort

Contact Us

Eric Huang

erichuang@npc.com.tw

www.npc.com.tw